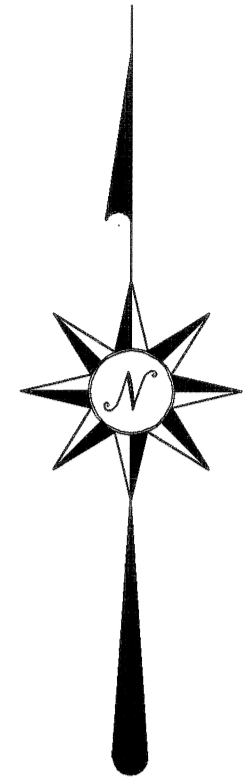
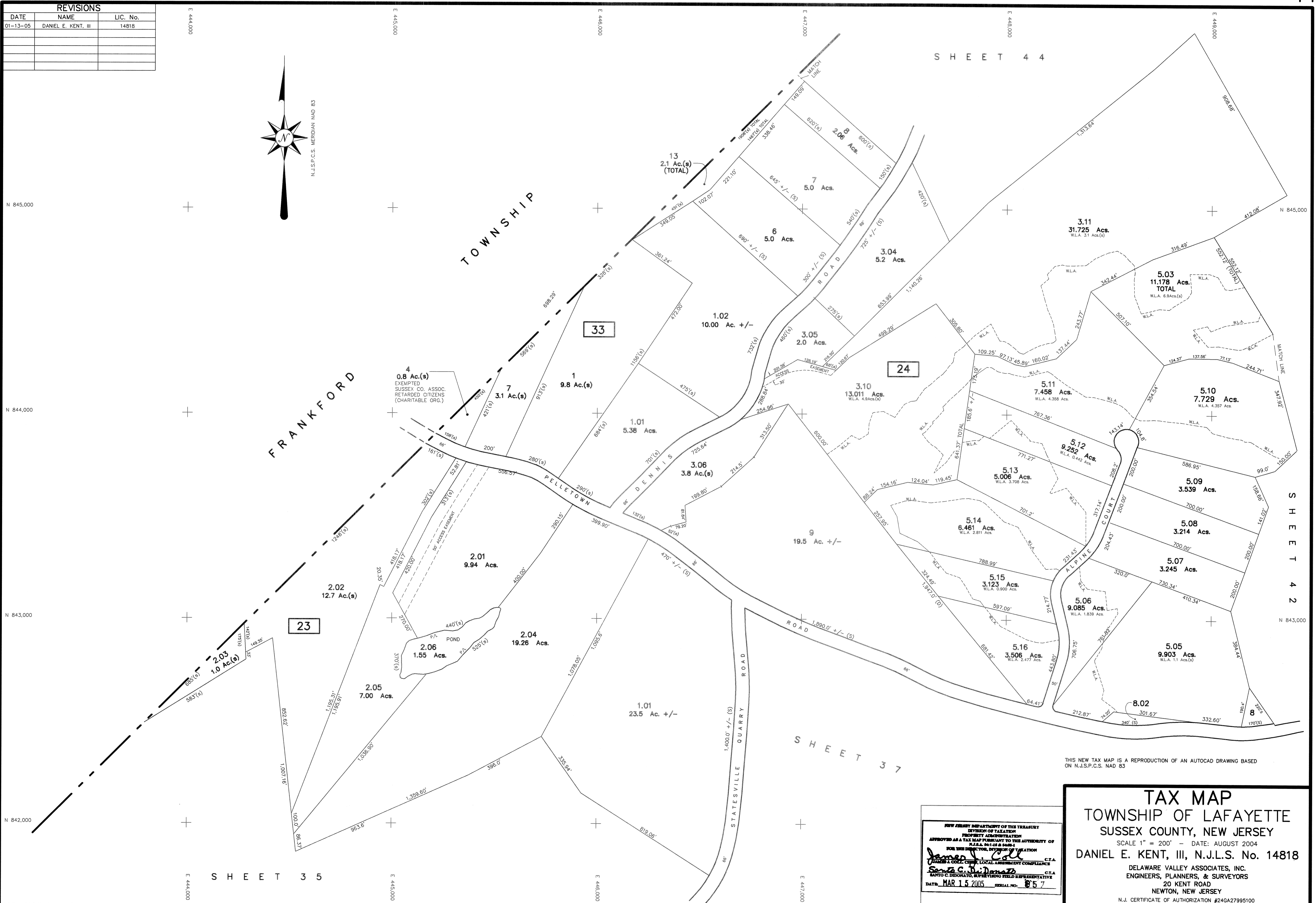


REVISIONS		
DATE	NAME	LIC. No.
01-13-05	DANIEL E. KENT, III	14818



SHEET 4 4



SHEET 3 5

SHEET 3 7

THIS NEW TAX MAP IS A REPRODUCTION OF AN AUTOCAD DRAWING BASED ON N.J.S.P.C.S. NAD 83

NEW JERSEY DEPARTMENT OF THE TREASURY
 DIVISION OF TAXATION
 PROPERTY ADMINISTRATION
 APPROVED AS A TAX MAP PURSUANT TO THE AUTHORITY OF
 P.L.R.A. 84-148 & 84-661
 FOR THE DIRECTOR, DIVISION OF TAXATION
Daniel E. Kent, III C.T.A.
 JAMES J. COLL, CHIEF, LOCAL ASSESSMENT COMPLIANCE
Sanjo C. DiDonato C.T.A.
 SANJO C. DIDONATO, SUPERVISING FIELD REPRESENTATIVE
 DATE: MAR 15 2005 SERIAL NO. 857

TAX MAP
TOWNSHIP OF LAFAYETTE
SUSSEX COUNTY, NEW JERSEY
 SCALE 1" = 200' - DATE: AUGUST 2004
DANIEL E. KENT, III, N.J.L.S. No. 14818
 DELAWARE VALLEY ASSOCIATES, INC.
 ENGINEERS, PLANNERS, & SURVEYORS
 20 KENT ROAD
 NEWTON, NEW JERSEY
 N.J. CERTIFICATE OF AUTHORIZATION #24GA27995100