



# Lafayette Township Smoke and Carbon Monoxide Alarm Compliance Information Sheet

ALL Smoke and Carbon Monoxide Alarms (Battery and Electric) must be **less than 10 years old from the date of manufacture.** The date is located on the back of the alarm. If there is no date listed, the alarm will be considered to be over 10 years old.

Battery Powered Smoke Alarms must have a **10 year sealed battery**

Electric Smoke Alarms must have a battery back up. The back-up battery does not have to be a 10 year battery

Electric Smoke Alarms cannot be replaced with Battery Powered Alarms.

Homes Built after 8/6/86 are required to have all Electric Smoke Alarms, the alarms must be interconnected (when one goes off they all go off)

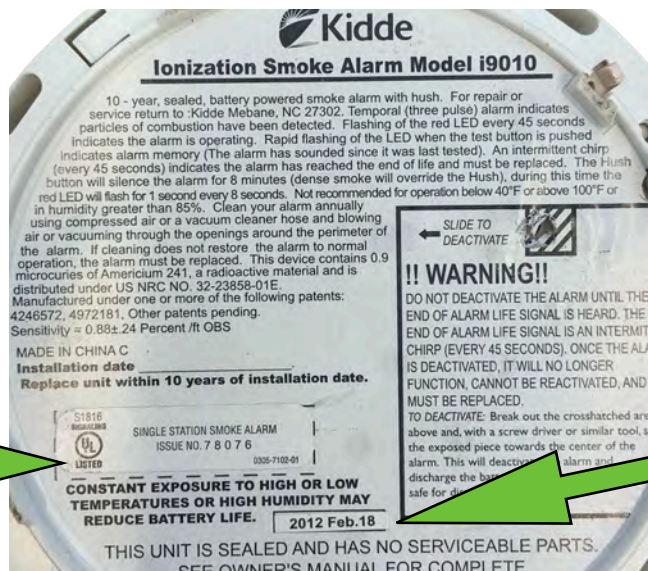
All Smoke and Carbon Monoxide Alarms must be UL listed. Alarms that are not UL listed are typically sold by online vendors and discount stores. Please read the description carefully before purchasing

Smoke Alarms must be mounted on the ceiling or the wall between 4 and 10 inches from the ceiling.

Carbon Monoxide Alarms can be battery or electric. They must be located within 10 feet of Sleeping areas. Combination Smoke and Carbon Monoxide alarms are acceptable as long as they meet the above requirements. Carbon Monoxide alarms can be mounted at any height on the wall or on the ceiling. Battery powered Carbon Monoxide alarms are not required to have a ten year battery. If the home has all electric appliances, no attached garage/carport, and no fireplace, Carbon Monoxide alarms are not required.

Please test and inspect all alarms prior to your scheduled inspection date.

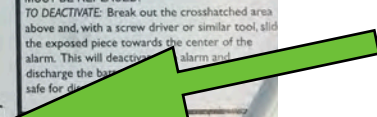
For more Information please visit [www.lafayettewp.org](http://www.lafayettewp.org)



UL Certification



Date of Manufacture



## Fire Extinguishers

The code requires a fire extinguisher be installed in the kitchen area or within 10 feet of the kitchen on the way to an exterior exit. It must be in a visible location, not in a closet or behind a door. The extinguisher must be permanently installed using the manufacturers supplied brackets. The fire extinguisher must be rated for residential use, consisting of an A:B:C type; Rated a minimum of 2A-10BC, be no larger than a 10 pound fire extinguisher, and have a date on the label that is within one year of this inspection. An older extinguisher meeting the rating requirements which has an up to date service tag from an approved fire extinguisher service company certifying it is in working condition is acceptable. **New extinguishers are not required to be serviced or tagged, as long as the seller or agent can provide proof of purchase or receipt.**



Example of a Service Tag



**1-A:10-BC  
NOT Acceptable**



**2-A:10-BC - ABC Dry Chemical  
ACCEPTABLE**



**Certificate valid for 6 months from date of issue.**

Continued next page

## EXAMPLES OF SMOKE DETECTOR & CO ALARM LOCATIONS

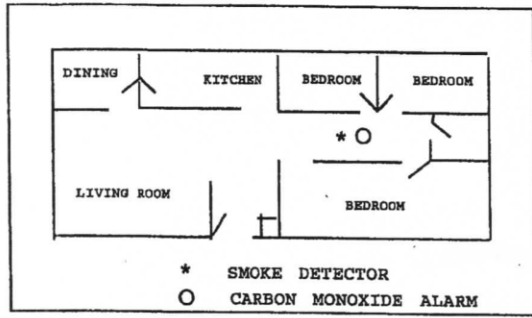


Figure 1

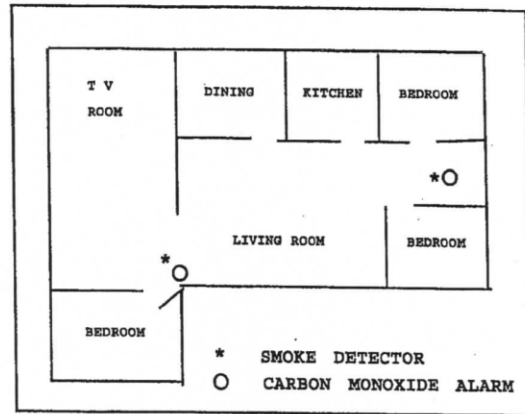


Figure 2

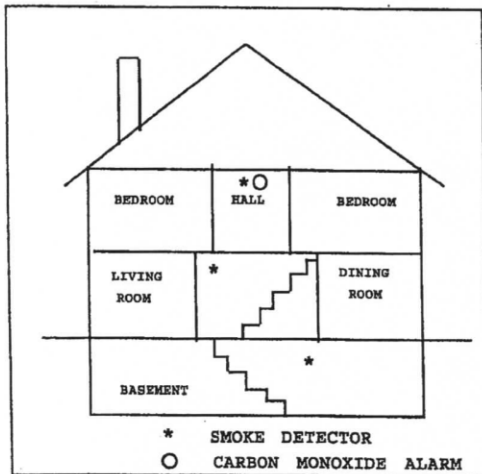


Figure 3

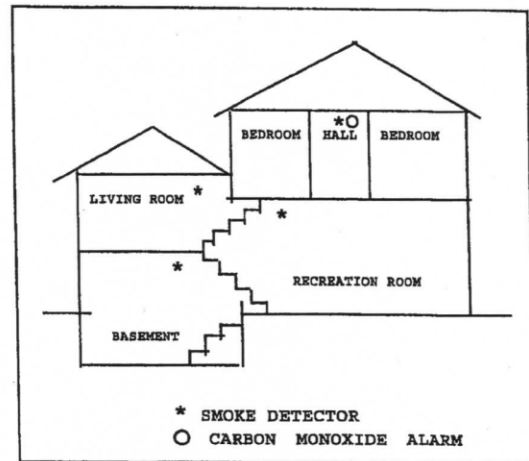


Figure 4

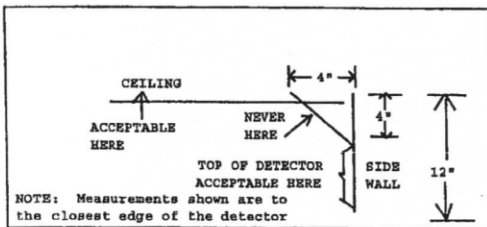


Figure 5

Please Contact The Fire Prevention Office With Any Further Questions  
(973) 383-1817 Ext 11  
Email: [fireprevention@lafayettewp.org](mailto:fireprevention@lafayettewp.org)