

# Requirements for Smoke Detector / Carbon Monoxide/ Fire Extinguisher Certification

In order to successfully pass the inspection, your property will need to meet **all** regulations mandated by the state and municipality. These requirements are detailed below and specifically refer to smoke detectors, carbon monoxide detectors, and fire extinguishers.

Please consult these requirements and contact the Lafayette Township Fire Prevention Bureau with any questions or concerns **prior** to your appointment. If your property does not adequately meet these requirements, you will **fail and be required to schedule a re-inspection** (including a \$50 re-inspection fee). Your property must pass inspection prior to the closing or rental; you will receive a penalty for non-compliance. New homeowners or renters **cannot** occupy the home or rental unit prior to the inspection or a \$500.00 penalty will be assessed.

**Please Note:** The property owner, realtor, or anyone over the age of eighteen (18) years of age must be present at the time of the inspection, and payment must be made **prior** to the inspection.

**No inspections will occur without payment being received.**

## **Fee Schedules:**

After completing the Application for Smoke/ Carbon Monoxide/ Fire Extinguisher Certification, please mail, fax, email, or drop off the form. Your inspection fee is determined by counting the number of business days from the day we receive your application until your closing date. Fees are as follows:

1. Request for a CSDCMDC received ten (10) or more business days prior to the change of occupancy: \$50.00
2. Request for a CSDCMDC received One (1) to nine (9) business days prior to the change Of occupancy: \$75.00
3. Re-inspection or no-show fee: \$50.00 (This is in addition to the original cost of the Inspection) **Please Note:**
  1. Applications received less than ten (10) days before the closing date will try to be accommodated; however, this is not always possible. This is the reason for sending in the application with ten (10) or more business days' notice.

**Payment by check or money order is required BEFORE the inspection will be completed. Checks and money orders can be made out to: Township of Lafayette and may be brought to the Fire Prevention office at 33 Morris Farm Rd Lafayette NJ 07848.**

## Smoke Detector Requirements

Please refer to the following requirements based on the year that your house was last modified or built.

Year	Code	Requirements
<b>1978</b>	1216.3.3	Minimum of <b>1</b> smoke detector installed on each level including the basement <b>No interconnection required</b>
<b>1981</b>	1716.3.4	Minimum of <b>1</b> smoke detector installed on each level including the basement <b>No interconnection required</b>
<b>1984</b>	1716.3.3	Smoke Detector outside bedrooms Smoke detector on each story including basement For split levels, one smoke detector on upper level <b>Interconnection required</b>
<b>1987</b>	1018.3.5	Smoke detector required outside bedrooms (hallway) Smoke detector on each story including basement For split levels, one smoke detector on upper level <b>Interconnection required</b>
<b>1990</b>	1018.3.2	Smoke detector required in all bedrooms (hallway) Smoke detector required outside the bedrooms Smoke detectors required on each level, including basement For split levels, one smoke detector is sufficient on the upper level <b>Interconnection required</b>
<b>1993</b>	919.3.2	Smoke detector required in all bedrooms Smoke detector required outside the bedrooms (hallway) Smoke detectors required on each level, including basement For split levels, one smoke detector is sufficient on the upper level <b>Interconnection required</b> <b>Battery backup required</b>

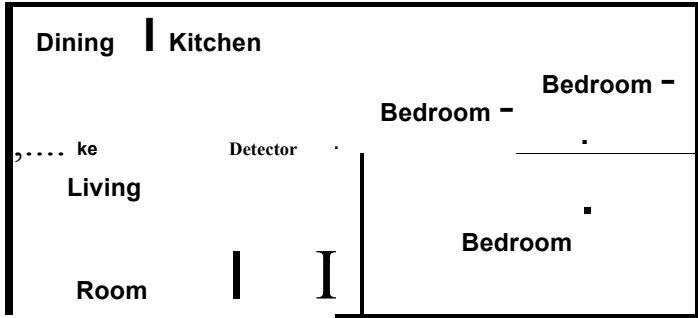
### Fire Alarm/ Monitored Systems:

If your home has any type of monitored/ un-monitored Fire Alarm System, it must be fully functional at the time of inspection. Operational systems **must be taken off line and you must have proper passcode at the time of inspection.** Non-functional or defunct fire alarm system components must be completely removed and apply to the chart above.

Please consult the following diagrams, which show where detectors are required for certain houses:

Centralized Bedrooms:

Shall have a minimum of (1) smoke detector and (1) carbon monoxide detector within (10) feet of each sleeping area. (Combo units are acceptable)



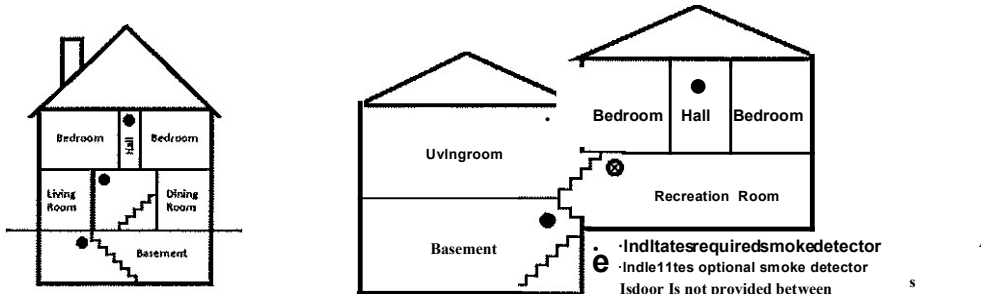
A smoke alarm should be Located between the sleeping area and the rest of the family living unit

Non-Centralized Bedrooms:

Shall have a minimum of (1) smoke detector and (1) carbon monoxide detector within (10) feet of each sleeping area. (Combo units are acceptable)

Multi-Level Homes:

Shall have a minimum of (1) smoke detector on each level. If there are multi-level bedrooms, (1) Carbon monoxide detector required within (10) feet of each sleeping area.



ke detector should be located on each story

**Detector Requirements**

Smoke Detector(s):

- Must be less than (10) years old per NFPA 72 14.4.7.1

- Hard wired / interconnected systems must remain hardwired and interconnected. Systems **cannot be replaced** by battery operated only type of detector.
- Interconnected smoke detector systems: When a detector is activated, **ALL** detectors **MUST** activate.
- Smoke detectors must be wired and mounted properly Carbon Monoxide Detector(s):
- Must be less than (7) years old
- Must be placed within (10) feet of each sleeping area
- Plug-in A/C type must be located in a common area within (10) feet of the sleeping area(s)
- **Carbon monoxide detectors are not to be in the basement, garage, or near any fueled fired appliances**

Smoke Detector/ Carbon Monoxide Detector Combo Units:

- Must be less than (10) years old per NFPA 72 14.4.7.2
- Must be placed within (10) feet of each sleeping area
- Combo units should only be used in common areas within (10) feet of the sleeping areas
- **Smoke Detector/ Carbon Monoxide Detector Combo Units are not to be in the basement, garage, or near any fueled fired appliances**

\*All detectors should be maintained and installed per manufacturers specifications

## **Fire Extinguisher Requirements:**

The requirements for the type and placement of the extinguishers are as follows:

- At least one portable fire extinguisher **shall be mounted** in all one and two-family dwellings (except seasonal rental units) upon change of occupancy
- The extinguisher shall be listed, labeled, charged, and operable (arrow must be in the green area of the gauge)
- The extinguisher shall be within the manufacturer specifications for life cycle
- Acceptable Fire Extinguisher size shall be no less than a **2A:10BC** (ABC Type) o The extinguisher **must** be the type that has a hose connected to it
- The hangers or brackets supplied by the manufacturer must be used
- In a **galley kitchen** without wall space, the extinguisher must be located within (10) feet of the kitchen and must be clearly visible from the cooking area
- In an **eat in kitchen**, the fire extinguisher must be mounted, clearly visible from the cooking area and near an exit from the kitchen

- The fire extinguisher must be mounted between two (2) feet and five (5) feet above the floor
- The **extinguisher must be visible from the cooking area** and in a readily accessible location, free from being blocked by furniture, storage, cabinets, or other items. Extinguisher **cannot** be located in a closet or cabinet
- The extinguisher must be near a room exit or travel path that provides an escape route to the exterior
- The fire extinguisher must be maintained according to the manufacturer's instructions
- The extinguisher must be installed with the operating instructions clearly visible