



Lafayette Township Smoke and Carbon Monoxide Alarm Compliance Information Sheet

ALL Smoke and Carbon Monoxide Alarms (Battery and Electric) must be less than 10 years old from the date of manufacture. The date is located on the back of the alarm. If there is no date listed, the alarm will be considered to be over 10 years old.

Battery Powered Smoke Alarms must have a 10 year sealed battery

Electric Smoke Alarms must have a battery back up. The back-up battery does not have to be a 10 year battery

Electric Smoke Alarms cannot be replaced with Battery Powered Alarms.

Homes Built after 8/6/86 are required to have all Electric Smoke Alarms, the alarms must be interconnected (when one goes off they all go off)

All Smoke and Carbon Monoxide Alarms must be UL listed. Alarms that are not UL listed are typically sold by online vendors and discount stores. Please read the description carefully before purchasing

Smoke Alarms must be mounted on the ceiling or the wall between 4 and 10 inches from the ceiling.

Carbon Monoxide Alarms can be battery or electric. They must be located within 10 feet of Sleeping areas. Combination Smoke and Carbon Monoxide alarms are acceptable as long as they meet the above requirements. Carbon Monoxide alarms can be mounted at any height on the wall or on the ceiling. Battery powered Carbon Monoxide alarms are not required to have a ten year battery. If the home has all electric appliances, no attached garage/carport, and no fireplace, Carbon Monoxide alarms are not required.

Please test and inspect all alarms prior to your scheduled inspection date.

For more Information please visit www.lafayettewp.org



EXAMPLES OF SMOKE DETECTOR & CO ALARM LOCATIONS

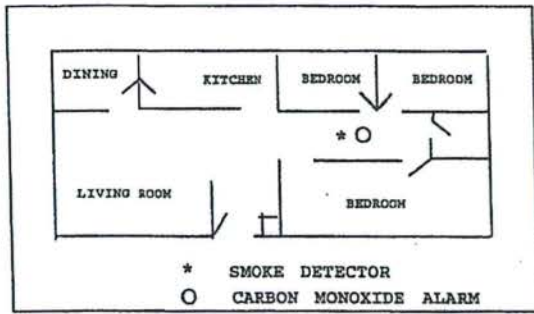


Figure 1

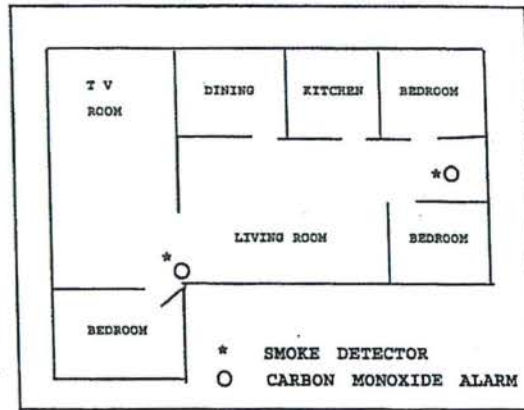


Figure 2

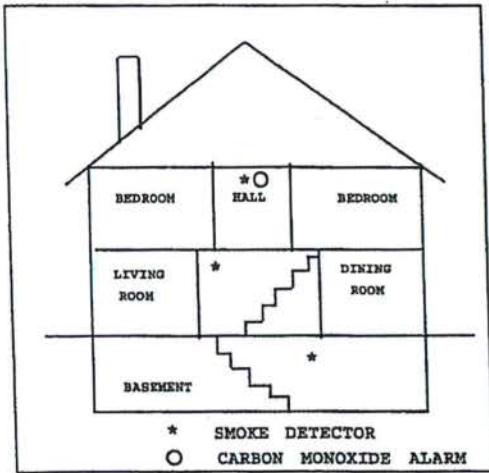


Figure 3

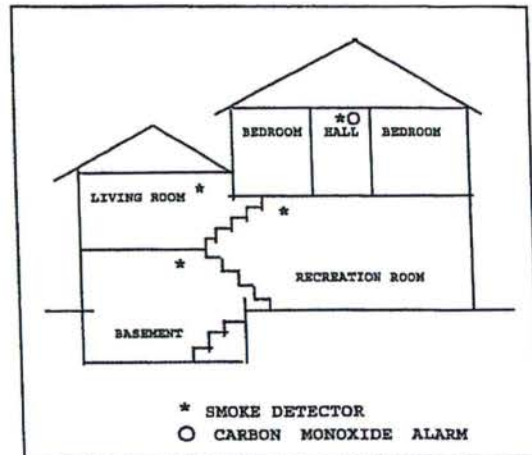


Figure 4

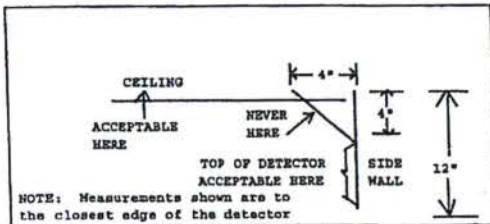


Figure 5

Please Contact The Fire Prevention Office With Any Further Questions
(973) 383-1817 Ext 11
Email: fireprevention@lafayettewp.org



Division of Fire Safety

MEMORANDUM

To: All Local Enforcing Agencies, the New Jersey Real Estate Commission, and the New Jersey Association of Realtors

From: Louis Kilmer, Chief, Bureau of Fire Code Enforcement

Date: February 13, 2025

Subject: Secondary Power Source Identification Label Guidance Document

Governor Murphy recently signed into law P.L.2025, c.19 which, among other items, provides labeling requirements for certain residential structures containing secondary power sources. The purpose of this document is to provide guidance to fire code officials, realtors, and the general public until regulations can be promulgated. The requirements apply to one- or two-family and attached single family dwellings only, and will be enforced upon a change of occupancy.

A structure used or intended for use for residential purposes by one or two households must have a label installed within 18 inches of the main electrical panel and electrical meter warning of the dangers associated with secondary power sources. A secondary power source may include permanently installed internal combustion generators, solar panels, battery storage systems, or any other supplemental source of electrical energy to the primary power supply. The label must be marked with the wording similar to "CAUTION: MULTIPLE SOURCES OF POWER." and may not be handwritten. A label compliant with

ANSI Z535.4 will meet the requirements of this law and may be referenced in the subsequent regulations.

These requirements already apply to new installations of secondary power sources and have been added to the Uniform Fire Safety Act to provide the same level of protection to our firefighters in existing installations. Labels that meet the requirements are generally available at minimal cost. Any questions can be posed to the Division of Fire Safety at (609) 633-6132 or bfcecodeadmin@dca.nj.gov. Additionally, the Division of Consumer Affairs may be reached at (973) 504-6200 or askconsumeraffairs@dca.njoag.gov.

Thank you.