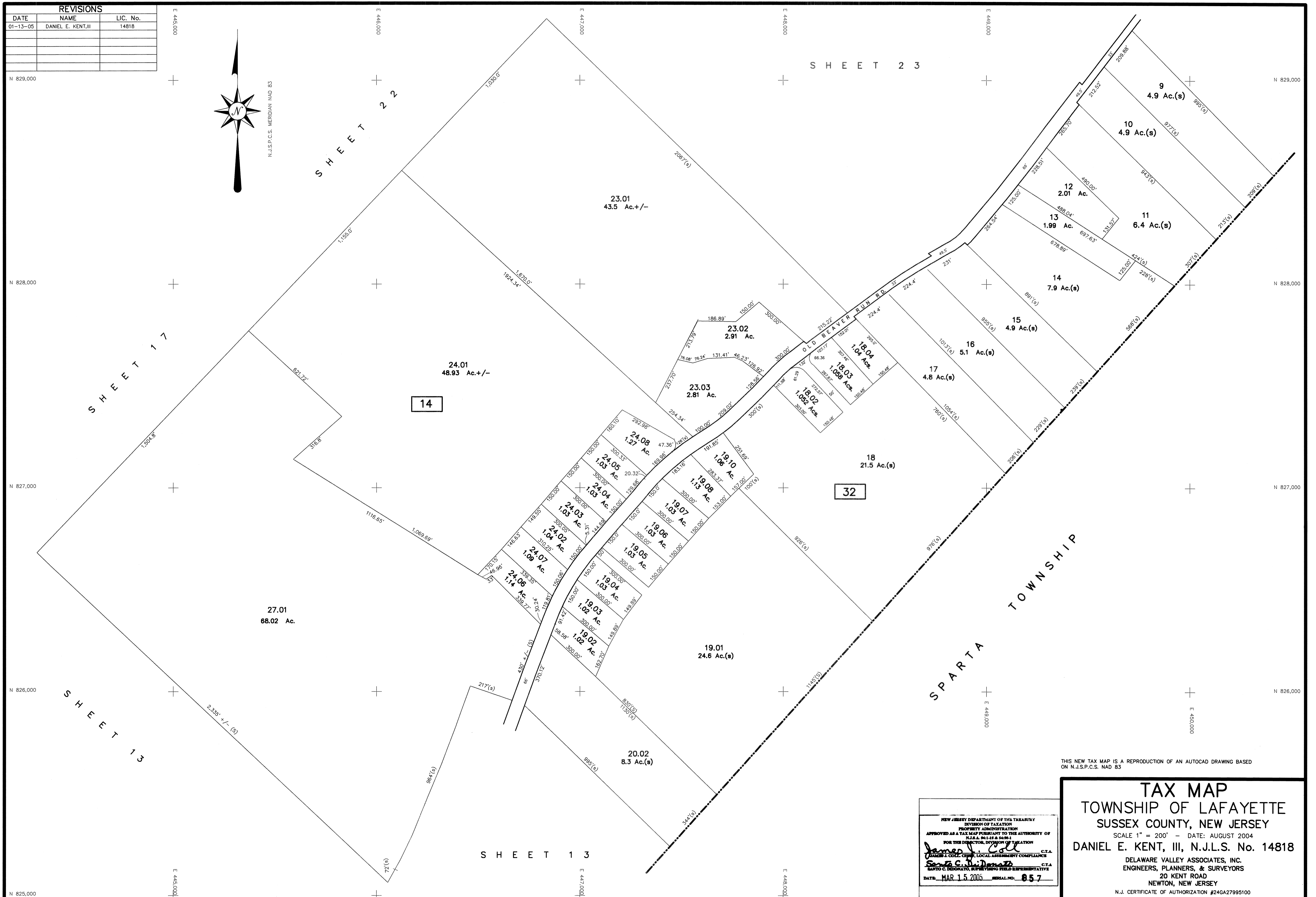
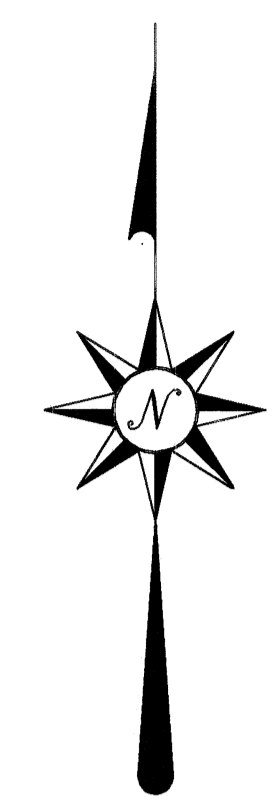


REVISIONS		
DATE	NAME	LIC. No.
01-13-05	DANIEL E. KENT, III	14818



NEW JERSEY DEPARTMENT OF THE TREASURY
 DIVISION OF TAXATION
 PROPERTY ADMINISTRATION
 APPROVED AS A TAX MAP PRESENTING TO THE AUTHORITY OF
 N.J.S.A. 52:27 & 52:28
 FOR THE DIRECTOR, DIVISION OF TAXATION
James J. Coll C.T.A.
 JAMES J. COLL, CHIEF, LOCAL ASSESSMENT COMPLIANCE
Santa C. DiDonato C.T.A.
 SANTA C. DIDONATO, SUPERVISING FIELD REPRESENTATIVE
 DATE: MAR 15 2005 SERIAL NO: 857

THIS NEW TAX MAP IS A REPRODUCTION OF AN AUTOCAD DRAWING BASED ON N.J.S.P.C.S. NAD 83

TAX MAP
TOWNSHIP OF LAFAYETTE
SUSSEX COUNTY, NEW JERSEY
 SCALE 1" = 200' - DATE: AUGUST 2004
DANIEL E. KENT, III, N.J.L.S. No. 14818
 DELAWARE VALLEY ASSOCIATES, INC.
 ENGINEERS, PLANNERS, & SURVEYORS
 20 KENT ROAD
 NEWTON, NEW JERSEY
 N.J. CERTIFICATE OF AUTHORIZATION #24GA27995100