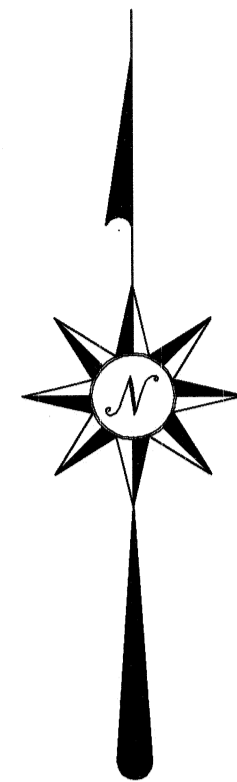
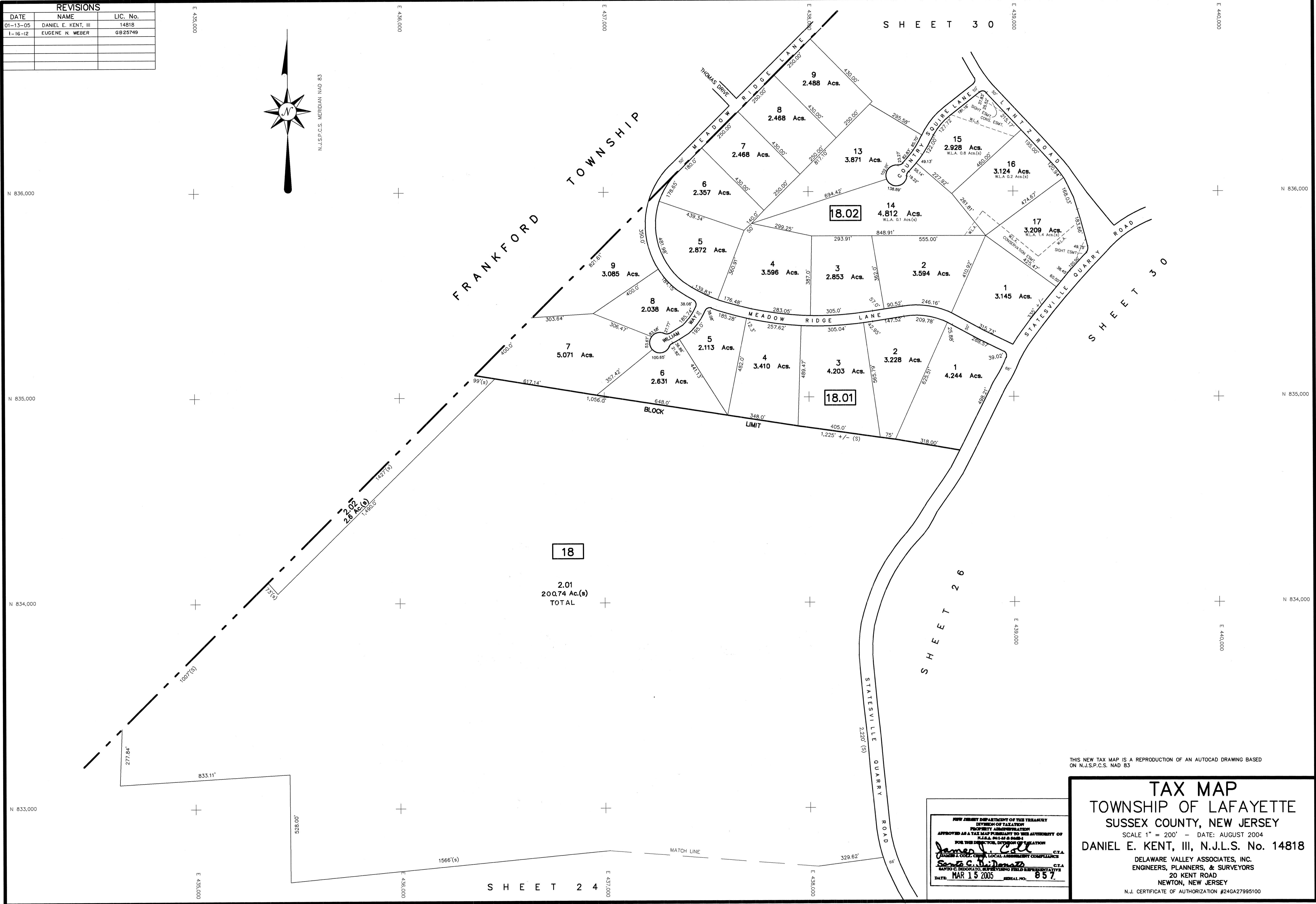


REVISIONS		
DATE	NAME	LIC. No.
01-13-05	DANIEL E. KENT, III	14818
1-16-12	EUGENE N. WEBER	GB25749



N.J.S.P.C.S. MERIDIAN NAD 83



18

2.01
200.74 Ac.(s)
TOTAL

THIS NEW TAX MAP IS A REPRODUCTION OF AN AUTOCAD DRAWING BASED ON N.J.S.P.C.S. NAD 83

TAX MAP
TOWNSHIP OF LAFAYETTE
SUSSEX COUNTY, NEW JERSEY
 SCALE 1" = 200' - DATE: AUGUST 2004
DANIEL E. KENT, III, N.J.L.S. No. 14818
 DELAWARE VALLEY ASSOCIATES, INC.
 ENGINEERS, PLANNERS, & SURVEYORS
 20 KENT ROAD
 NEWTON, NEW JERSEY
 N.J. CERTIFICATE OF AUTHORIZATION #24GA27995100

NEW JERSEY DEPARTMENT OF THE TREASURY
 DIVISION OF TAXATION
 PROPERTY ADMINISTRATION
 APPROVED AS A TAX MAP PURSUANT TO THE AUTHORITY OF
 T.C.A. §§ 54-14 & 54-15
 FOR THE DIRECTOR, DIVISION OF TAXATION
James J. Call C.T.A.
 JAMES A. COLL, CHIEF, LOCAL ASSESSMENT COMPLIANCE
Scott C. Demas C.T.A.
 SCOTT C. DEMAS, SUPERVISING FIELD REPRESENTATIVE
 DATE: **MAR 15 2005** SERIAL NO. **857**