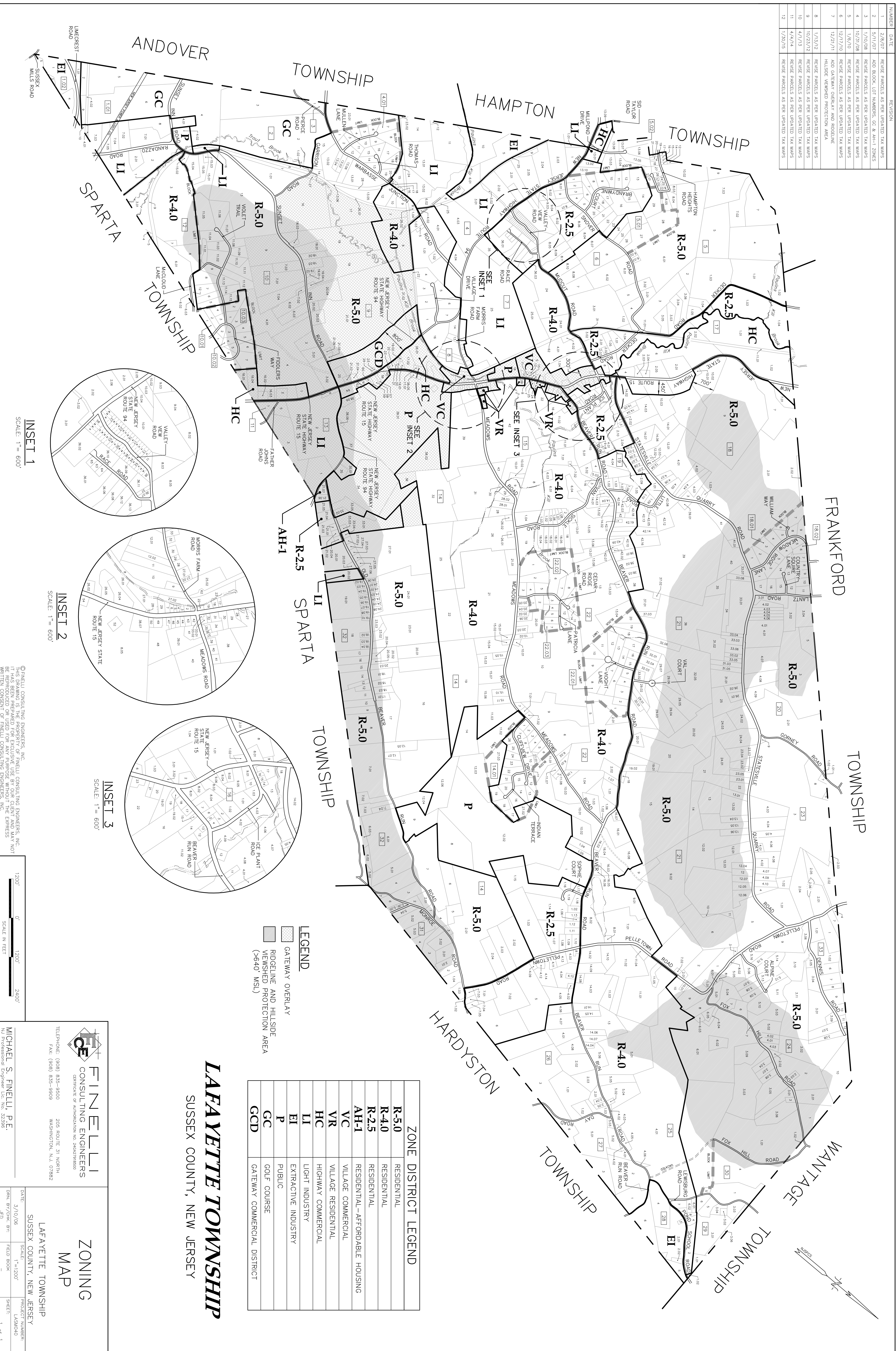
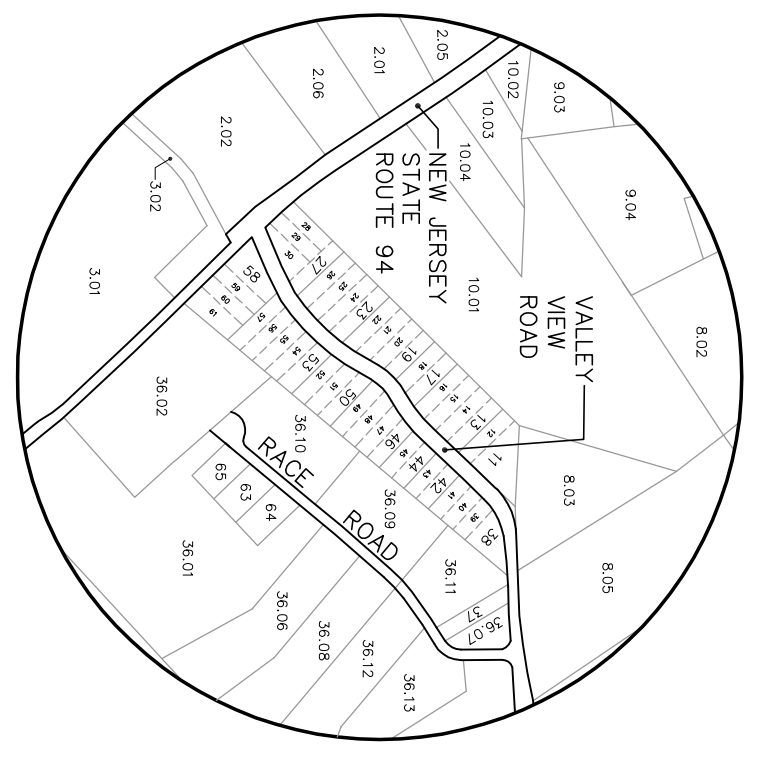


NUMBER	DATE	REVISION
1	2/8/07	REVISE PARCELS AS PER UPDATED TAX MAPS
2	5/11/07	ADD BLOCK, LOT NUMBERS, GC & AH-1 ZONES
3	1/10/08	REVISE PARCELS AS PER UPDATED TAX MAPS
4	10/21/08	REVISE PARCELS AS PER UPDATED TAX MAPS
5	1/6/09	REVISE PARCELS AS PER UPDATED TAX MAPS
6	12/17/10	REVISE PARCELS AS PER UPDATED TAX MAPS
7	12/21/11	ADD GATEWAY OVERLAY AND RIDGE/LE HILLSIDE VIEWSHED PROTECTION AREA
8	1/13/12	REVISE PARCELS AS PER UPDATED TAX MAPS
9	10/23/12	REVISE PARCELS AS PER UPDATED TAX MAPS
10	4/7/13	REVISE PARCELS AS PER UPDATED TAX MAPS
11	4/4/14	REVISE PARCELS AS PER UPDATED TAX MAPS
12	1/20/15	REVISE PARCELS AS PER UPDATED TAX MAPS

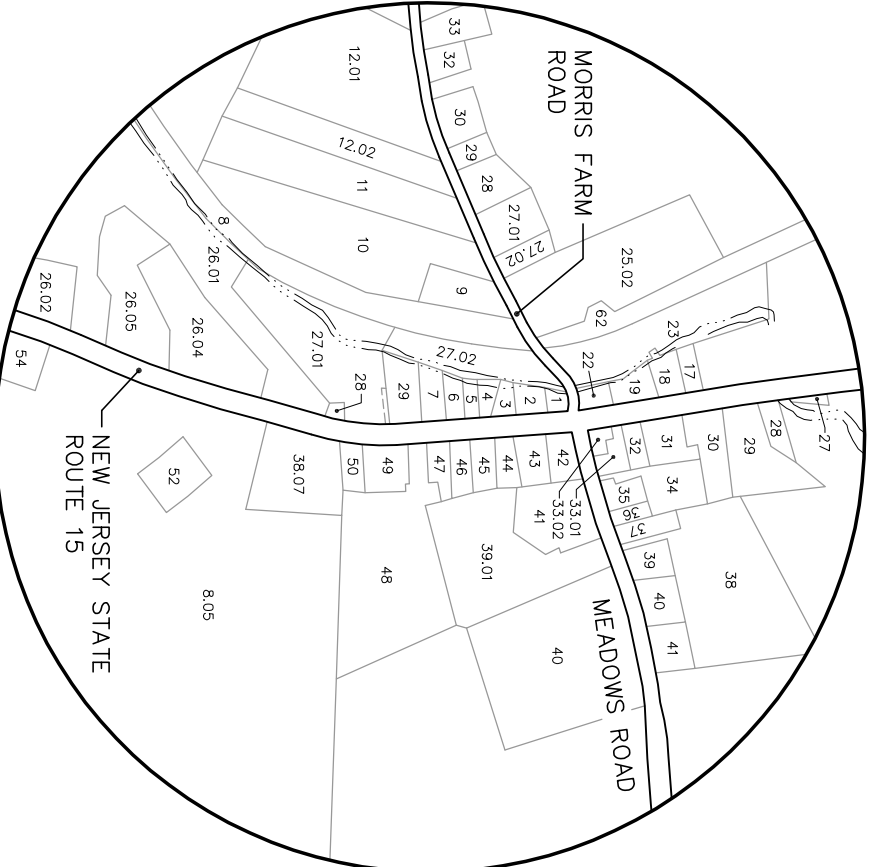


C:\LAFAYETTE\LASM40\LAFAYETTE-ZONING-MAP.DWG

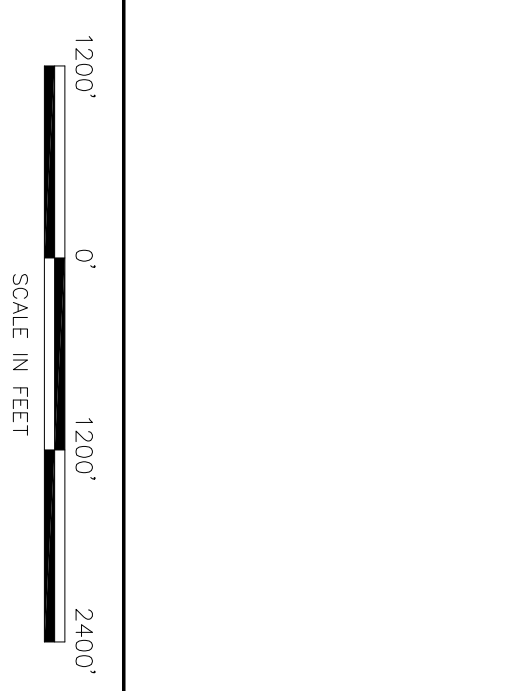
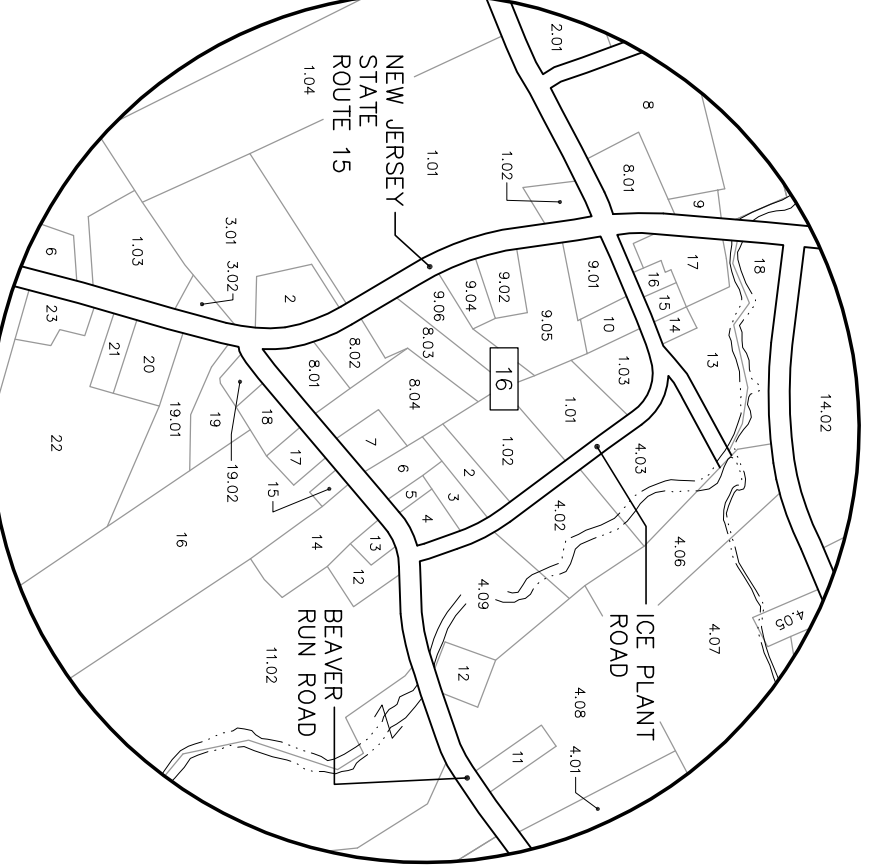
INSET 1
SCALE: 1" = 600'



INSET 2
SCALE: 1" = 600'



INSET 3
SCALE: 1" = 600'



LEGEND

- GATEWAY OVERLAY
- RIDGE/LE AND HILLSIDE VIEWSHED PROTECTION AREA (>640' MSL)

ZONE	DISTRICT	LEGEND
R-5.0	RESIDENTIAL	
R-4.0	RESIDENTIAL	
R-2.5	RESIDENTIAL	
AH-1	RESIDENTIAL-AFFORDABLE HOUSING	
VC	VILLAGE COMMERCIAL	
VR	VILLAGE RESIDENTIAL	
HC	HIGHWAY COMMERCIAL	
LI	LIGHT INDUSTRY	
EI	EXTRACTIVE INDUSTRY	
P	PUBLIC	
GC	GOLF COURSE	
GCD	GATEWAY COMMERCIAL DISTRICT	

LAFAYETTE TOWNSHIP

SUSSEX COUNTY, NEW JERSEY

FINELLI CONSULTING ENGINEERS
 ENGINEER OF ADMINISTRATION NO. 246427918500
 TELEPHONE: (908) 835-9500
 FAX: (908) 835-9009
 205 ROUTE 31 NORTH
 WASHINGTON, N.J. 07282

ZONING MAP
 LAFAYETTE TOWNSHIP
 SUSSEX COUNTY, NEW JERSEY
 DATE: 3/10/06
 SCALE: 1" = 1200'
 PROJECT NUMBER: LASM40
 DWN. BY/CHK. BY: FIELD BOOK
 SHEET: 1 of 1

© FINELLI CONSULTING ENGINEERS, INC.
 THIS DRAWING IS THE PROPERTY OF FINELLI CONSULTING ENGINEERS, INC. AND
 IT HAS BEEN PREPARED FOR THE EXCLUSIVE USE OF OUR CLIENT AND MAY NOT
 BE REPRODUCED OR TRANSMITTED IN ANY FORM OR BY ANY MEANS, ELECTRONIC
 OR MECHANICAL, INCLUDING PHOTOCOPYING, RECORDING, OR BY ANY INFORMATION
 WRITTEN CONSENT OF FINELLI CONSULTING ENGINEERS, INC.